

## Shop Floor Data Collection



The Shop Floor Data Collection Module is a comprehensive solution for barcoded time capture, field service, time and attendance, and employee management.

Shop Floor Insight integrates directly with NAV to capture work progress and material usage in real-time, dramatically reducing the effort to manage production and job data.

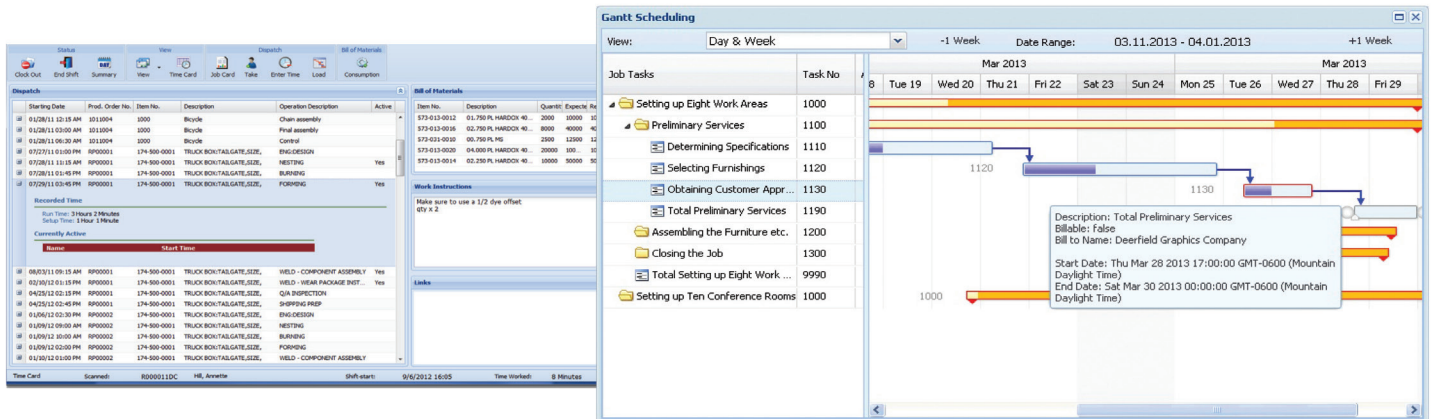
### Benefits

- Eliminate manual time entry with barcode scanning for Production Orders, Jobs, Assembly Orders, and Maintenance
- Capture operational data on the shop floor or in the field, including consumption, output, scrap, and quality
- Record non-productive and rework time for advanced reporting
- Record time and attendance based on employee shifts with exception reporting
- Multi-level timecard approval from shop floor or NAV
- Automatically calculate overtime, shift differentials, etc for direct export to payroll systems
- Access via web browser to enable data entry from mobile devices in the field or shop floor

# Time Collection for Production

## Professional Production Management

The Time Collection Module utilizes barcoded production orders to speed shop data input and reduce the errors associated with manual time entry.



### Streamline Shop Floor Data Capture

Enhance data capture and management using Shop Floor Insight's intuitive user interface. Employees can quickly record run or setup time against production orders, non-productive time, and maintenance using shared shop terminals or hand-held devices.



### Significantly Reduce Rework

Calculating rework (the amount of time spent repairing defective product) can be extremely tedious and hard to determine. The Time Collection Module provides readily available insight into not only how much rework is taking place, but also allows users to drill-down and find the root cause.



### Real-time Reporting

Real-time reporting allows users to analyze job progression and costing; providing immediate feedback to supervisors and planners while maintaining a detailed production history. Shop Floor Insight also provides fully defined reports for managing operations, which can be used for safety program compliance.

Bill of Materials

Item No.	Description	Quantity	Expected	Remaining	Unit of Measure
573-013-0012	01.750 PL HARDOX 40...	2000	10000	10000	LB
573-013-0016	02.750 PL HARDOX 40...	8000	40000	40000	LB
573-031-0010	00.750 PL MS	2500	12500	12500	LB
573-013-0020	04.000 PL HARDOX 40...	20000	100...	100...	LB
573-013-0014	02.250 PL HARDOX 40...	10000	50000	50000	LB

Quality Measures

Qty Measure C	Description	Min. Value	Max. Value	Mean Tolerance
ID	Inside Diam...	0.1	0.15	0
OD	Outside Dia...	0.2	0.205	0

Work Instructions

Make sure to use a 1/2 dye offset  
qty x 2

Links

# Time and Attendance

## Dramatically Reduce Time and Attendance Data Entry

Automate the time collection process to significantly reduce the labor costs and data entry errors associated with manual entry. Users enter time and attendance information directly, with simple supervisor approvals.

Built-in validation and customizable payroll rules for eliminates manual payroll data management, and Shop Floor Insight's intuitive shop floor interface, which emulates the look and feel of a paper time card, speeds adoptions and reduces

**Edit - Time Card - TS00001 - Mark Hanson**

General

No.: TS00001 Description: 10/22/12 to 10/28/12

Resource No.: MARK

Resource Name: Mark Hanson

Unapproved Job Lines: 1

Open: ☒ Approved: ☐

Line	Work Date	Work Type	Work Type Description	Setup Time	Run Time	Prod. Order No.	Prod. Order Line No.	Operat. No.
1	9/23/2012	205	Production	0.50	1.00	1011002	10000	10
2	9/23/2012	205	Production	0.00	2.00	1011003	10000	10
3	9/23/2012	205	Production	1.00	0.00	1011004	10000	10

**Edit - Time Card - TC023095 - Ray Frederick**

General

No.: TC023095 Description: 09/23/13 to 09/29/13

Resource No.: RAY

Resource Name: Ray Frederick

Time Card Summary: Total Time: 7 Run Time: 3

**Edit - TCM Expense Invoice - EXP000003 - Ray Frederick**

General

No.: EXP000003 Buy-from Vendor No.: Ray Frederick

Buy-from Vendor: V1654 Vendor Invoice No.: TC023095

No.	Description	Quantity	Expense Gros...	Expense Tax ...
S370	Trucks, Gas, Ins, Licence, Wash	1	117.00	12.00
S020	Lunch	1	17.63	3.22
S150	Travel	1	436.65	23.87

**Vendor Statistics - V1654**

Vendor No.: V1654

Balance (\$): 0.00

Outstanding Ord...: 0.00

Amt. Rcd. Not In...: 0.00

Outstanding Inv...: 532.19

Total (LCY): 532.19

Overdue Amount...: 0.00



### Customizable and Configurable

Customizable rules further reduce the time and effort needed to calculate overtime and other variables. Configurable work types, payroll codes, project types, and shift patterns adapt to all potential workforce configurations.



### Clear Communication

In the event of time card issues, collaboration tools allow the payroll department to communicate directly to responsible personnel, providing valuable insight across the organization and minimizing the time needed to rectify payroll discrepancies.



## About Insight Works

Founded in 2008, Insight Works began as a collection of professionals with decades of combined experience developing and implementing productivity solutions. With a well rounded collective skill set, Insight Works has quickly become one of Canada's fastest growing companies by putting our customers' success above all else.

### Put Our Domain Expertise To Work For You

Insight Works has extensive experience developing productivity solutions for clients in the manufacturing and distribution industries. It's what we know and what we do well. Based on our experience and industry feedback, we have developed a collection of add-ons for Microsoft Dynamics NAV that promote operational efficiency from the shop floor to the boardroom.

### We've Been There

Because we've been on both sides of the implementation experience, we understand the unique needs of all users. At Insight Works, our "shop floor to the top floor" approach is what makes our employees and our products so responsive.



#### Gold Certified

We're proud to uphold the strict standards that the Microsoft Gold ERP Certification requires as it speaks to our ability to develop world-class products that make a positive impact for our clients.

Gold

Microsoft Partner



#### Always Up To Date

As Microsoft NAV evolves, so do our products. You and your clients can be sure that you're working with up-to-the-minute tools that reflect the most current ERP technology.



## Contact Insight Works

#### Head Office

Suite 102, 5661 99 Street  
Edmonton, Alberta T6E 3N8

**Call Toll Free:** 1 877 488 6116

info@dmsiworks.com  
[www.dmsiworks.com](http://www.dmsiworks.com)

